

**EXHIBIT "A"**  
**METES AND BOUNDS DESCRIPTIONS**  
**CASTLE HILLS STRATEGIC PARTNERSHIP AGREEMENT**  
**FEBRUARY, 2009**

**Parcel 1 - 3.000 acres (DCFWSO 1G)**

BEING a tract of land situated in the B.B.B. & C.R.R. Survey Abstract No. 180, Denton County, Texas, said tract being a part of those certain lands conveyed to Castle Hills Development Corporation as recorded in Denton County Documents CC #97-026044 and CC #97-026045; and being a portion of a 2628 acre tract known as Denton County Fresh Water Supply District No. 1 (DCFWSO No.1) as recorded in Volume 1191 Page 111 Deed Records Denton County, Texas (DRDCT); said tract being more particularly described as follows:

BEGINNING at the southwest end of a corner clip at the intersection of the north line of Farm To Market Road No. 544 (FM 544) (a variable width right-of-way), with the west line of Farm To Market Road No. 2281 (FM 2281 Denton Rd.) (a variable width right-of-way);

1. THENCE South 89°13'48" West, along the north line of said FM 544, for a distance of 471.72 ft. to a point for corner;
2. THENCE North 00°01'35" East, departing said north line, for a distance of 262.27 ft. to a point for corner;
3. THENCE North 89°57'08" East, for a distance of 502.90 ft. to a point for corner on the west line of said F.M. 2281;
4. THENCE South 01°56'18" East, along said west line, for a distance of 217.08 ft. to a point at the northeast end of the corner clip at the intersection of the north line of said FM 544 with said west line;
5. THENCE South 44°28'42" West, along said corner clip, for a distance of 55.21 ft. to the POINT OF BEGINNING and containing 3.000 acres or 130,645 square ft. of land.

**Parcel 2 - 83.415 acres (DCFWSO 1G)**

BEING a tract of land situated in the B.B.B. & C.R.R. Survey Abstract No. 180 and the Harrison Young Survey Abstract No. 1448 Denton County, Texas; said tract being a part of those certain lands conveyed to Castle Hills Development Corporation as recorded in Denton County Documents CC #97-026044 and CC #97-026045; and being a portion of a 2628 acre tract known as Denton County Fresh Water Supply District No. 1 (DCFWSO No.1) as recorded in Volume 1191 Page 111 Deed Records Denton County, Texas (DRDCT); said tract being more particularly described as follows:

BEGINNING at the northeast end of a corner clip at the intersection of the south line of Farm To Market Road No. 544 (FM 544) (a variable width right-of-way), with the east line of Midway Road West (a variable width right-of-way) as recorded in Denton County Document CC #98-R0027535;

1. THENCE along said south line with a circular curve to the left having a central angle of 21°51'21", a radius of 776.20 ft., a tangent length of 149.86 ft., and a chord of South 65°28'25" East 294.29 ft., for an arc distance of 296.09 ft. to a point of tangency;
2. THENCE South 76°24'05" East, continuing along said south line, for a distance of 578.13 ft. to a point at the north end of a corner clip at the intersection of said south line with the west line of State Highway No. 121 By-Pass;
3. THENCE South 33°08'50" East, along said corner clip, for a distance of 116.57 ft. to a point for the beginning of a circular curve to the left on said west line;
4. THENCE along said west line with said circular curve to the left having a central angle of 10°58'14", a radius of 3633.68 ft., a tangent length of 348.94 ft., and a chord of South 03°54'18" West 694.68 ft., for an arc distance of 695.74 ft. to a point of tangency;
5. THENCE South 01°34'49" East, continuing along said west line, for a distance of 561.45 ft. to a point for the beginning of a circular curve to the left;
6. THENCE continuing along said west line with said circular curve to the left having a central angle of 02°07'24", a radius of 11,474.16 ft., a tangent length of 212.62 ft., and a chord of South 02°38'31" East 425.17 ft., for an arc distance of 425.19 ft. to a point for the beginning of a reverse circular curve to the right;
7. THENCE South 03°42'12" East, continuing along said west line, for a distance of 439.23 ft. to a point for the beginning of a circular curve to the right;
8. THENCE continuing along said west line with said circular curve to the right having a central angle of 32°03'42", a radius of 1622.02 ft., a tangent length of 466.05 ft., and a chord of South 12°19'39" West 895.86 ft., for an arc distance of 907.65 ft. to a point of tangency;
9. THENCE South 28°21'29" West, continuing along said west line, for a distance of 267.21 ft. to a point at the intersection of said west line with the south line of said Castle Hills Development tract, said south line being common with the south line of said DCFWSO No. 1;
10. THENCE South 89°23'00" West, departing said west line and along said common south lines, for a distance of 790.73 ft. to a point at the most westerly southwest corner of said Castle Hills tract and said DCFWSO No. 1;
11. THENCE North 00°37'48" West, along the common west line of said Castle Hills tract and said DCFWSO No. 1, for a distance of 3202.73 ft. to a point on the original centerline of said Midway Road West as abandoned;
12. THENCE South 75°59'13" East, departing said common west line and along said old centerline, for a distance of 5.17 ft. to a point on the west line of a 5 ft. wide strip of land annexed to the City of Lewisville, said west line also being the west line of a tract conveyed to the City of Lewisville for fire station purposes;
13. THENCE South 00°37'48" East, along said west lines, for a distance of 25.67 ft. to a point on the original south line of said Midway Road West, said point being the southwest corner of said fire station tract;
14. THENCE North 89°19'22" East, along the south line of said fire station tract and along the original south line of said Midway Road West, for a distance of 192.85 ft. to a point;

15. THENCE North 00°40'38" West, departing said south lines, and along the east line of said fire station tract, for a distance of 168.27 ft. to a point at the northeast corner of said fire station tract;
16. THENCE North 50°50'45" West, along a northeast line of said fire station tract, for a distance of 169.14 ft. to a point on the current east line of said Midway Road West;
17. THENCE North 50°48'49" East, along said east line, for a distance of 70.97 ft. to a point;
18. THENCE North 43°00'53" East, continuing along said east line, for a distance of 91.21 ft. to a point;
19. THENCE North 39°21'52" East, continuing along said east line, for a distance of 28.13 ft. to a point at the southwest end of said corner clip at the intersection of said east line with the south line of said FM 544;
20. THENCE North 80°43'16" East, along said corner clip, for a distance of 34.95 ft. to the POINT OF BEGINNING and containing 83.415 acres of land.

**Parcel 3 - 32.099 acres (DCFWSO 1G)**

BEING a tract of land situated in the B.B.B. & C.R.R. Survey Abstract No. 180 and the J. R. McWhorter Survey Abstract No. 1690 Denton County, Texas; said tract being a part of those certain lands conveyed to Castle Hills Development Corporation as recorded in Denton County Documents CC #97-026044 and CC #97-026045; and being a portion of a 2628 acre tract known as Denton County Fresh Water Supply District No. 1 (DCFWSO No.1) as recorded in Volume 1191 Page 111 Deed Records Denton County, Texas (DRDCT); said tract being more particularly described as follows:

BEGINNING at the intersection of the north line of Farm To Market Road No. 544 (FM 544) (a 120 ft. right-of-way), with the south line of State Highway No. 121 (SH 121) (a variable width right-of-way);

1. THENCE North 81°08'16" East, along the south line of said SH 121, for a distance of 131.66 ft. to a point for the beginning of a circular curve to the left;
2. THENCE continuing along said south line with said circular curve to the left having a central angle of 15°30'18", a radius of 5789.48 ft., a tangent length of 788.16 ft., and a chord of North 73°23'07" East 1561.92 ft., for an arc distance of 1566.70 ft. to a point at a clip at the intersection of said south line with the west line of State Highway No. 121 By-Pass;
3. THENCE South 54°36'58" East, along said clip, for a distance of 188.00 ft. to a point for the beginning of a non-tangent circular curve to the left on said west line;
4. THENCE along said west line with said circular curve to the left having a central angle of 16°29'22", a radius of 3633.68 ft., a tangent length of 526.51 ft., and a chord of South 27°41'04" West 1042.14 ft., for an arc distance of 1045.75 ft. to a point;
5. THENCE South 22°35'24" West, continuing along said west line, for a distance of 151.81 ft. to a point for the beginning of a non-tangent circular curve to the left;
6. THENCE continuing along said west line with said circular curve to the left having a central angle of 03°09'57", a radius of 3645.18 ft., a tangent length of 100.73 ft., and a chord of South 15°28'25" West 201.39 ft., for an arc distance of 201.42 ft. to a point at the northeast end of a corner clip at the intersection of said west line with the north line of said FM 544;
7. THENCE South 58°42'51" West, along said corner clip, for a distance of 120.96 ft. to a point at the southwest end of said corner clip and on said north line;
8. THENCE North 76°24'05" West, along said north line, for a distance of 556.08 ft. to a point for the beginning of a circular curve to the right;
9. THENCE continuing along said north line with said circular curve to the right having a central angle of 67°32'18", a radius of 656.20 ft., a tangent length of 438.77 ft., and a chord of North 42°37'56" West 729.49 ft., for an arc distance of 773.50 ft. to a point of tangency;
10. THENCE North 08°51'48" West, continuing along said north line, for a distance of 297.99 ft. to the POINT OF BEGINNING and containing 32.099 acres of land.

**Parcel 4 - 38.869 acres (DCFWSO 1G)**

BEING a tract of land situated in the B.B.B. & C.R.R. Survey Abstract No. 180, S. M. Haydon Survey Abstract No. 537, and the J. R. McWhorter Survey Abstract No. 1690 Denton County, Texas; said tract being a part of those certain lands conveyed to Castle Hills Development Corporation as recorded in Denton County Documents CC #97-026044 and CC #97-026045; and being a portion of a 2628 acre tract known as Denton County Fresh Water Supply District No. 1 (DCFWSO No.1) as recorded in Volume 1191 Page 111 Deed Records Denton County, Texas (DRDCT); said tract being more particularly described as follows:

BEGINNING at the south end of a corner clip at the intersection of the south line of Farm To Market Road No. 544 (FM 544) (a 120 ft. right-of-way), with the north line of Midway Road West (a variable width right-of-way) as recorded in Denton County Document CC #98-R0027535;

1. THENCE South 39°21'25" West, along said north line, for a distance of 28.33 ft. to a point;
2. THENCE South 43°00'53" West, continuing along said north line, for a distance of 83.59 ft. to a point;
3. THENCE South 50°48'49" West, continuing along said north line, for a distance of 95.56 ft. to a point;
4. THENCE South 59°08'03" West, continuing along said north line, for a distance of 95.56 ft. to a point;
5. THENCE South 67°27'17" West, continuing along said north line, for a distance of 95.56 ft. to a point;
6. THENCE South 74°06'39" West, continuing along said north line, for a distance of 57.37 ft. to a point for the beginning of a circular curve to the right;
7. THENCE continuing along said north line with said circular curve to the right having a central angle of 10°41'58", a radius of 658.61 ft., a tangent length of 61.67 ft., and a chord of South 81°57'24" West 122.81 ft., for an arc distance of 122.99 ft. to a point;
8. THENCE South 02°41'38" East, departing said north line, for a distance of 30.45 ft. to a point for the beginning of a non-tangent circular curve to the left on the original centerline of Midway Road West, said centerline being common with the south line of said Castle Hills Development tract and the south line of said DCFWSO No. 1;
9. THENCE along said centerline and said common lines, with said circular curve to the left having a central angle of 07°39'43", a radius of 450.00 ft., a tangent length of 30.13 ft., and a chord of North 86°52'27" West 60.13 ft., for an arc distance of 60.18 ft. to a point of tangency;
10. THENCE South 89°17'41" West, continuing along said centerline and said common lines, for a distance of 1433.10 ft. to a point at the most westerly southwest corner of said Castle Hills Development tract and said DCFWSO No. 1;
11. THENCE North 02°23'24" East, departing said centerline, and along the most westerly lines of said Castle Hills tract and said DCFWSO No. 1, for a distance of 825.37 ft. to a point on the south line of State Highway No. 121 (a variable width right-of-way), said south line being common with the original north line of said DCFWSO No. 1;
12. THENCE North 81°08'16" East, departing said west lines, and along said common line, for a distance of 1691.44 ft. to a point at the intersection of said common lines with the south line of said FM 544;
13. THENCE South 08°51'48" East, along said south line, for a distance of 297.99 ft. to a point for the beginning of a circular curve to the left;
14. THENCE continuing along said south line with said circular curve to the left having a central angle of 37°50'23", a radius of 776.20 ft., a tangent length of 266.05 ft., and a chord of South 27°46'59" East 503.36 ft., for an arc distance of 512.62 ft. to a point at the north end of said corner clip at the intersection of said south line with the north line of said Midway Road West;
15. THENCE South 02°11'17" East, along said corner clip, for a distance of 34.78 ft. to the POINT OF BEGINNING and containing 38.869 acres of land.

**Parcel 5 - 7.209 acres (DCFWSO 1F)**

BEING a tract of land situated in the Amos Singleton Survey Abstract No. 1138, Denton County, Texas; said tract being a part of those certain lands conveyed to Castle Hills Property Company as evidenced by deed recorded in County Clerk's Document No. 2006-153340 Deed Records of Denton County, Texas (DRDCT); and being a portion of a 2628 acre tract known as Denton County Fresh Water Supply District No. 1 (DCFWSO No.1) as recorded in Volume 1191 Page 111 Deed Records Denton County, Texas (DRDCT); said tract of land being more particularly described as follows:

BEGINNING at a 1/2" iron rod found for corner at the intersection of the east line of a tract conveyed to E-Systems, Inc. Pool Trust as Tract II as recorded in Volume 1067, Page 962 DRDCT with the south line of State Highway No. 121;

1. THENCE North 60°47'31" East for a distance of 1234.03 ft. to a point for corner at the north end of a proposed corner clip at the intersection of said south line with the west line of proposed Essex Drive (a proposed 80 ft. right-of-way);
2. THENCE South 74°12'29" East, departing said south line, and along said corner clip, for a distance of 42.43 ft. to a point for corner at the south end of said clip on said west line of proposed Essex Drive;
3. THENCE South 29°12'29" East, along said west line, for a distance of 205.50 ft. to a point for corner;
4. THENCE South 60°47'31" West, departing said west line, for a distance of 1406.69 ft. to a point for corner returning to the east line of said E-Systems tract;
5. THENCE North 01°59'53" East, along said east line, for a distance of 275.34 ft. to the Point of Beginning and containing 7.209 acres (314,027 sq. ft.) of land.

**Parcel 6 - 18.067 acres (DCFWSO 1F)**

BEING a tract of land situated in the Amos Singleton Survey Abstract No. 1138, Denton County, Texas; said tract being a part of those certain lands conveyed to Castle Hills Property Company as evidenced by deed recorded in County Clerk's Document No. 2006-153340 Deed Records of Denton County, Texas (DRDCT); and being a portion of a 2628 acre tract known as Denton County Fresh Water Supply District No. 1 (DCFWSO No.1) as recorded in Volume 1191 Page 111 Deed Records Denton County, Texas (DRDCT); said tract of land being more particularly described as follows:

BEGINNING at a TxDOT right-of-way monument found for corner at the intersection of the south line of State Highway No. 121 with the west line of Standridge Drive (a variable width right-of-way);

1. THENCE South 75°39'46" East, departing said south line, and along said west line, for a distance of 122.50 ft. to a 1/2" iron rod found for corner;
2. THENCE South 29°33'19" East, continuing along said west line, for a distance of 50.17 ft. to a 1/2" iron rod found for corner;
3. THENCE South 15°12'54" East, continuing along said west line, passing at 38.06 ft. a TxDOT right-of-way monument, and continuing along the proposed extension of said west line, for a total distance of 250.38 ft. to a point for corner and for the beginning of a circular curve to the left;
4. THENCE continuing along said west line with said circular curve to the left having a central angle of 13°59'35", a radius of 1117.00 ft., a tangent length of 137.08 ft., and a chord length of 272.12 ft., for an arc distance of 272.80 ft. to a point of tangency for corner;
5. THENCE South 29°12'29" East, continuing along said west line, for a distance of 39.91 ft. to a point for corner at the north end of a corner clip at the intersection of said west line with the north line of proposed Windhaven Parkway (a 100 ft. right-of-way);
6. THENCE South 15°47'31" West, along said corner clip, for a distance of 42.43 ft. to a point for corner at the south end of said clip on said north line;
7. THENCE South 60°47'31" West, along said north line, for a distance of 246.53 ft. to a point for corner and for the beginning of a circular curve to the right;
8. THENCE continuing along said circular curve to the right having a central angle of 03°39'33", a radius of 7450.00 ft., a tangent length of 237.97 ft., and a chord length of 475.50 ft., for an arc distance of 475.78 ft. to a point of reverse curvature to the left;
9. THENCE continuing along said circular curve to the left having a central angle of 00°12'50", a radius of 7550.00 ft., a tangent length of 14.09 ft., and a chord of 28.19 ft., for an arc distance of 28.19 ft. to a point for corner;
10. THENCE North 29°12'29" West, departing said north line, for a distance of 384.30 ft. to a point for corner;
11. THENCE North 74°12'29" West, for a distance of 98.99 ft. to a point for corner;
12. THENCE South 60°47'31" West, for a distance of 300.00 ft. to a point for corner;
13. THENCE North 29°12'29" West, for a distance of 81.35 ft. to a point for corner;
14. THENCE South 60°47'31" West, for a distance of 429.00 ft. to a point for corner on the east line of proposed Essex Drive (an 80 ft. right-of-way);
15. THENCE North 29°12'29" West, along said east line, for a distance of 205.50 ft. to a point for corner at the south end of a corner clip at the intersection of said east line with the south line of said State Highway No. 121;
16. THENCE North 15°47'31" East, along said corner clip, for a distance of 42.43 ft. to a point for corner on said south line;
17. THENCE North 60°47'31" East, along said south line, for a distance of 37.71 ft. to a TxDOT monument found for corner;
18. North 64°21'05" East, along said south line, for a distance of 317.55 ft. to a TxDOT monument found for corner;

19. North 67°10'47" East, along said south line, for a distance of 399.53 ft. to a TxDOT monument found for corner;
20. North 60°23'27" East, along said south line, for a distance of 451.95 ft. to a TxDOT monument found for corner;
21. North 64°57'59" East, along said south line, for a distance of 150.48 ft. to a 1/2" iron rod set for corner;
22. North 60°23'25" East, along said south line, for a distance of 200.00 ft. to the POINT OF BEGINNING and containing 18.067 acres of land.

**Parcel 7a - 0.255 acres (DCFWSO 1F)**

BEING a tract of land situated in the Amos Singleton Survey Abstract No. 1138, Denton County, Texas; said tract being a part of those certain lands conveyed to Castle Hills Property Company as evidenced by deed recorded in County Clerk's Document No. 2006-153340 Deed Records of Denton County, Texas (DRDCT); and being a portion of a 2628 acre tract known as Denton County Fresh Water Supply District No. 1 (DCFWSO No.1) as recorded in Volume 1191 Page 111 Deed Records Denton County, Texas (DRDCT); said tract of land being more particularly described as follows:

BEGINNING at a TxDOT right-of-way marker found for corner at the intersection of the east line of Standridge Drive (a variable width right-of-way) with the south line of State Highway No. 121 (a variable width right-of-way);

1. THENCE North 60°47'30" East, along said south line, for a distance of 680.30 ft. to a TxDOT right-of-way marker found for corner;
2. THENCE North 54°07'47" East, continuing along said south line, for a distance of 341.95 ft. to a 1/2" iron rod found for corner;
3. THENCE North 57°34'50" East, continuing along said south line, for a distance of 88.65 ft. to a 1/2" iron rod found at the intersection of said south line with the west line of a 150 ft. wide Texas Utilities Electric Easement as recorded in Volume 609 Page 547 DRDCT;
4. THENCE South 24°04'13" West, along said west line, for a distance of 18.11 ft. to a point for corner on a line 10 ft. south of and parallel to the south line of said S.H. No. 121;
5. THENCE South 57°34'50" West, along said parallel line, for a distance of 73.25 ft. to a point for corner;
6. THENCE South 54°07'47" West, continuing along said parallel line, for a distance of 342.23 ft. to a point for corner;
7. THENCE South 60°47'30" West, continuing along said parallel line, for a distance of 690.81 ft. to a point for corner on the east line of said Standridge Drive;
8. THENCE North 15°34'04" East, along said east line, for a distance of 14.09 ft. to the POINT OF BEGINNING and containing 0.255 acres of land.

**Parcel 7b - 0.340 acres (DCFWS D 1H)**

BEING a tract of land situated in the Amos Singleton Survey Abstract No. 1138, Denton County, Texas; said tract being a part of those certain lands conveyed to Castle Hills Property Company as evidenced by deed recorded in County Clerk's Document No. 2006-153340 Deed Records of Denton County, Texas (DRDCT); and being a portion of a 2628 acre tract known as Denton County Fresh Water Supply District No. 1 (DCFWS D No.1) as recorded in Volume 1191 Page 111 Deed Records Denton County, Texas (DRDCT); said tract of land being more particularly described as follows:

**COMMENCING** at a TxDOT right-of-way marker found for corner at the intersection of the east line of Standridge Drive (a variable width right-of-way) with the south line of State Highway No. 121 (a variable width right-of-way); Thence North 60°47'30" East, along said south line, for a distance of 680.30 ft. to a TxDOT right-of-way marker found for corner; Thence North 54°07'47" East, continuing along said south line, for a distance of 341.95 ft. to a 1/2" iron rod found for corner; Thence North 57°34'50" East, continuing along said south line, for a distance of 88.65 ft. to a 1/2" iron rod found for **POINT OF BEGINNING** at the intersection of said south line with the west line of a 150 ft. wide Texas Utilities Electric Easement as recorded in Volume 609 Page 547 DRDCT;

1. THENCE North 57°34'50" East, continuing along said south line, for a distance of 248.34 ft. to a point for corner;
2. THENCE North 60°47'30" East, continuing along said south line, for a distance of 1225.58 ft. to a point for corner at the northwest corner of a tract conveyed to Hopkins Lewisville Ventures LP as recorded in C.C. #2007-146885 DRDCT;
3. THENCE South 15°19'25" East, departing said south line, and along the west line of said Hopkins tract, for a distance of 10.30 ft. to a point for corner;
4. THENCE South 60°47'30" West, departing said west line, and along a line 10 ft. south of and parallel to the south line of S.H. 121, for a distance of 1222.83 ft. to a point for corner;
5. THENCE North 24°04'13" East, along said west line, for a distance of 18.11 ft. to the POINT OF BEGINNING and containing 0.340 acres of land.

**Parcel 8a - 4.283 acres (DCFWSO 1H)**

BEING a tract of land situated in the T. Wilson Survey Abstract No. 1352 and the R. P. Hardin Survey Abstract No. 613, Denton County, Texas; said tract being all of that certain tract conveyed to Hopkins Lewisville Ventures LP, as recorded in C.C. #2007-146885 of the Deed Records of Denton County, Texas (DRDCT); said tract being a part of those certain lands conveyed to H.R. Bright as evidenced by deeds recorded in Volume 549, Page 45 DRDCT; and being a portion of a 2628 acre tract known as Denton County Fresh Water Supply District No. 1 (DCFWSO No.1) as recorded in Volume 1191 Page 111 DRDCT; and being more particularly described as follows:

**COMMENCING** at a TxDOT right-of-way marker found for corner at the intersection of the east line of Standridge Drive (a variable width right-of-way) with the south line of State Highway No. 121 (a variable width right-of-way); Thence North 60°47'30" East, along said south line, for a distance of 680.30 ft. to a TxDOT right-of-way marker found for corner; Thence North 54°07'47" East, continuing along said south line, for a distance of 341.95 ft. to a 1/2" iron rod found for corner; Thence North 57°34'50" East, continuing along said south line, at 88.65 ft. passing a 1/2" iron rod found at the intersection of said south line with the west line of a 150 ft. wide Texas Utilities Electric Easement as recorded in Volume 609 Page 547 DRDCT, and continuing for a total distance of 336.99 ft. to a point for corner; Thence North 60°47'30" East, continuing along said south line, for a distance of 1225.58 ft. to a point for corner at the northwest corner of a tract conveyed to Hopkins Lewisville Ventures LP as recorded in C.C. #2007-146885 DRDCT for the **POINT OF BEGINNING**;

1. THENCE North 60°40'30" East, continuing along said south line, for a distance of 306.34 ft. to a point for corner;
2. THENCE North 63°04'41" East, continuing along said south line, for a distance of 22.16 ft. to a point for corner on an east line of DCFWSO 1H;
3. THENCE South 01°24'18" East, along said east line, for a distance of 1096.16 ft. to a point for corner on the north line of Windhaven Parkway as recorded in Cabinet Y Sheet 644 DRDCT;
4. THENCE South 89°41'05" West, along said north line, for a distance of 8.22 ft. to a point for the beginning of a circular curve to the left;
5. THENCE continuing along said north line, with said circular curve to the left having a central angle of 03°29'40", a radius of 800.00 ft., a tangent length of 24.40 ft., and a chord of 48.78 ft., for an arc distance of 48.79 ft. to a point corner at the southwest corner of said Hopkins tract;
6. THENCE North 15°19'25" East, along said the west line of said Hopkins tract, for a distance of 972.71 ft. to the **POINT OF BEGINNING** and containing 4.283 acres of land.

**Parcel 8b - 45.438 acres (DCFWSO 1G)**

BEING a tract of land situated in the T. Wilson Survey Abstract No. 1352 and the R. P. Hardin Survey Abstract No. 613, Denton County, Texas; said tract being all of that certain tract conveyed to Hopkins Lewisville Ventures LP, as recorded in C.C. #2007-146885 of the Deed Records of Denton County, Texas (DRDCT); said tract being a part of those certain lands conveyed to H.R. Bright as evidenced by deeds recorded in Volume 549, Page 45 DRDCT; and being a portion of a 2628 acre tract known as Denton County Fresh Water Supply District No. 1 (DCFWSO No.1) as recorded in Volume 1191 Page 111 DRDCT; and being more particularly described as follows:

BEGINNING at the east end of a corner clip at the intersection of the south line of State Highway No. 121 with the west line of Josey Lane (a 120 ft. right-of-way);

1. THENCE South 29°07'41" East along the westerly right-of-way of Josey Lane for a distance of 705.80 ft. to the beginning of a circular curve to the right;
2. THENCE continuing along said westerly line with said circular curve to the right having a central angle of 06°18'54", a radius of 5669.58 ft., a tangent length of 312.77 ft., and a chord of 624.58 ft., for an arc distance of 624.90 ft. to a point for corner at the south end of a corner clip at the intersection of said west line with south line of Windhaven Parkway as recorded in Cabinet Y Sheet 644 DRDCT;
3. THENCE North 68°27'37" West, along said corner clip, for a distance of 42.06 ft to a point for corner at the north end of said corner clip and on the south line of said Windhaven Parkway;
4. THENCE South 66°02'39" West, along said south line, for a distance of 65.42 ft to a point for corner at the beginning of a tangent curve to the right;
5. THENCE continuing along said south line with said tangent curve, through a central angle of 10°15'52", a radius of 262.50 ft, a tangent length of 23.58 ft, and a chord bearing South 71°10'35" West, a chord distance of 46.96 ft, for a total arc distance of 47.03 ft to a point for corner at the beginning of a reverse curve to the left;
6. THENCE continuing along said south line with said reverse curve, through a central angle of 16°47'30", a radius of 237.50 ft, a tangent length of 35.05 ft, and a chord bearing South 67°54'47" West, a chord distance of 69.35 ft, for a total arc distance of 69.60 ft to a point for corner at the beginning of a compound curve to the left;
7. THENCE continuing along south line with said compound curve, through a central angle of 17°03'38", a radius of 700.00 ft, a tangent length of 104.99 ft, and a chord bearing South 50°59'13" West, a chord distance of 207.66 ft, for a total arc distance of 208.43 ft to a point for corner and tangency;
8. THENCE South 42°27' 24" West, continuing along said south line, for a distance of 43.12 ft to a point for corner at the beginning of a tangent curve to the right;
9. THENCE continuing along said south line, with said tangent curve, through a central angle of 15°25'53", a radius of 800.00 ft, a tangent length of 108.39 ft, and a chord distance of 214.81 ft, for a total arc distance of 215.46 ft to a point for corner on a south line of Denton County Fresh Water Supply District No. 1G;
10. THENCE South 89°32'10" West, along said south line, for a distance of 1064.87 ft. to a point for corner;
11. THENCE South 48°01'30" West, continuing along said south line, for a distance of 100.62 ft. to a point for corner;
12. THENCE South 88°35'42" West, continuing along the south line of DCFWSO 1G, for a distance of 20.00 ft. to a point for corner;
13. THENCE North 01°24'18" West, along a west line of said DCFWSO 1G, for a distance of 1146.16 ft. to a point for corner on the south line of said S.H. No. 121;
14. THENCE North 63°04'41" East, along said south line, for a distance of 22.16 ft. to a point for corner;
15. THENCE North 63°26'10" East, continuing along said south line, for a distance of 144.29 ft. to a point for corner;
16. THENCE North 66°18'49" East, continuing along said south line, for a distance of 480.18 ft. to a point for corner;

17. THENCE North  $60^{\circ}47'30''$  East, continuing along said south line, for a distance of 149.82 ft. to a point for corner;
18. THENCE North  $65^{\circ}21'47''$  East, continuing along said south line, for a distance of 150.48 ft. to a point for corner;
19. THENCE North  $60^{\circ}52'20''$  East, continuing along said south line, for a distance of 178.37 ft. to a point for corner at the west end of said corner clip at Josey Lane;
20. THENCE South  $76^{\circ}36'26''$  East, along said corner clip, for a distance of 125.22 ft. to the POINT OF BEGINNING and containing 45.438 acres of land.

**Parcel 9a - 3.982 acres (DCFWSO 1H)**

BEING a tract of land situated in the R. P. Hardin Survey Abstract No. 613, Denton County, Texas; said tract being a part of those certain lands conveyed to H.R. Bright as evidenced by deeds recorded in Volume 549, Page 45 of the Deed Records of Denton County, Texas (DRDCT); and being a portion of a tract conveyed to Castle Hills Property Co. as recorded in C.C. #2007-47966 DRDCT; and being a portion of a 2628 acre tract known as Denton County Fresh Water Supply District No. 1 (DCFWSO No.1) as recorded in Volume 1191 Page 111 DRDCT; and being more particularly described as follows:

BEGINNING at a point for corner at the intersection of the west line of Josey Lane (a 120 ft. right-of-way), with the north line of said R.P. Hardin Survey;

1. THENCE South 16°48'45" East, along said west line, for a distance of 22.78 ft. to a point for corner;
2. THENCE South 18°35'05" East, continuing along said west line, for a distance of 104.24 ft. to a point for corner, said point being the most easterly southeast corner of said Castle Hills Property Co. tract;
3. THENCE South 88°42'05" West, departing said west line and along said south line, for a distance of 244.36 ft. to a point for corner;
4. THENCE South 14°06'23" East, continuing along said south line, for a distance of 158.94 ft. to a point for corner;
5. THENCE South 63°05'05" West, continuing along said south line, for a distance of 338.72 ft. to a point for corner;
6. THENCE North 26°54'55" West, departing said south line, for a distance of 480.08 ft. to a point corner on the south line of said Windhaven Parkway at it's intersection with the south line of said Hardin Survey, said point being a north line of DCFWSO 1H;
7. THENCE North 89°32'10" East, along the north line of said DCFWSO 1H, for a distance of 685.11 ft. to the POINT OF BEGINNING and containing 3.982 acres of land.

**Parcel 9b - 3.352 acres (DCFWSO 1G)**

BEING a tract of land situated in the T. Wilson Survey Abstract No. 1352, Denton County, Texas; said tract being a part of those certain lands conveyed to H.R. Bright as evidenced by deeds recorded in Volume 549, Page 45 of the Deed Records of Denton County, Texas (DRDCT); and being a portion of a tract conveyed to Castle Hills Property Co. as recorded in C.C. #2007-47966 DRDCT; and being a portion of a 2628 acre tract known as Denton County Fresh Water Supply District No. 1 (DCFWSO No.1) as recorded in Volume 1191 Page 111 DRDCT; and being more particularly described as follows:

BEGINNING at a point for corner at the intersection of the west line of Josey Lane (a 120 ft. right-of-way), with the south line of Windhaven Parkway as recorded in Cabinet Y Sheet 644 DRDCT;

1. THENCE along the west line of said Josey Lane, with a circular curve to the right having a central angle of  $02^{\circ}37'46''$ , a radius of 5669.58 ft., a tangent length of 130.12 ft., and a chord length of 260.16 ft., for an arc distance of 260.19 ft. to a point for corner;
2. THENCE South  $13^{\circ}54'28''$  East, continuing along said west line, for a distance of 99.36 ft. to a point for corner;
3. THENCE South  $18^{\circ}26'01''$  East, continuing along said west line, for a distance of 8.87 ft. to a point for corner, said point being the intersection of a south line of DCFWSO 1G with the west line of said Josey Lane;
4. THENCE South  $89^{\circ}32'10''$  West, along said south line, for a distance of 685.11 ft. to a point for corner on the south line of said Windhaven Parkway and for the beginning of a circular curve to the left;
5. THENCE along said south line in an easterly direction with said circular curve to the left having a central angle of  $15^{\circ}25'53''$ , a radius of 800.00 ft., a tangent length of 108.39 ft., and a chord length of 214.81 ft., for an arc distance of 215.46 ft. to a point of tangency for corner;
6. THENCE North  $42^{\circ}27'24''$  East, continuing along said south line, for a distance of 43.12 ft. to a point for corner and for the beginning of a circular curve to the right;
7. THENCE continuing along said south line with said circular curve to the right having a central angle of  $17^{\circ}03'38''$ , a radius of 700.00 ft., a tangent length of 104.99 ft., and a chord length of 207.66 ft., for an arc distance of 208.43 ft. to a point for corner and for the beginning of a compound circular curve to the right;
8. THENCE continuing along said south line with said circular curve to the right having a central angle of  $16^{\circ}47'30''$ , a radius of 237.50 ft., a tangent length of 35.05 ft., and a chord length of 69.35 ft., for an arc distance of 69.60 ft. to a point for corner and for the beginning of a reverse circular curve to the left;
9. THENCE continuing along said south line with said circular curve to the left having a central angle of  $10^{\circ}15'52''$ , a radius of 262.50 ft., a tangent length of 23.58 ft., and a chord length of 46.96 ft., for an arc distance of 47.03 ft. to a point of tangency for corner;
10. THENCE North  $66^{\circ}02'39''$  East, continuing along said south line, for a distance of 65.42 ft. to a point for corner;
11. THENCE South  $68^{\circ}27'37''$  East, continuing along said south line, for a distance of 42.06 ft. to the POINT OF BEGINNING and containing 3.352 acres of land.

**Parcel 10a - 119.874 acres (DCFWSO 1F)**

BEING a tract of land situated in the T. Wilson Survey Abstract No. 1352, the R. P. Hardin Survey Abstract No. 613, the J.B. Shipp's Survey Abstract No. 1227, and the David Cook Survey Abstract No. 234, Denton County, Texas; said tract being a part of those certain lands conveyed to Castle Hills Property Co. as recorded in C.C. #2006-153340 of the Deed Records of Denton County, Texas (DRDCT); and being all of Windhaven Parkway East as dedicated by plat recorded in Cabinet X Page 453 DRDCT, and being all of Lewisville Towne Crossing Addition Lots 1-8 Block A per final plat recorded in Cabinet Y Page 388 DRDCT; and being a portion of a 2628 acre tract known as Denton County Fresh Water Supply District No. 1 (DCFWSO No.1) as recorded in Volume 1191 Page 111 DRDCT; and being more particularly described as follows

BEGINNING at the south end of a corner clip at the intersection of the south line of State Highway 121 (SH121), with the east line of Josey Lane, a 120 foot wide right-of-way;

1. THENCE North 15°11'48" East along said corner clip for a distance of 130.91 feet to the south line of SH121;
2. THENCE North 60°50'29" East for a distance of 441.35 feet, and continuing along the south line of SH121 as follows;
3. North 55°16'21" East for a distance of 474.68 feet;
4. North 58°06'31" East for a distance of 274.42 feet;
5. North 60°47'30" East for a distance of 1583.89 feet;
6. North 63°29'47" East for a distance of 267.19 feet;
7. North 66°11'18" East for a distance of 700.68 feet;
8. North 60°47'34" East for a distance of 87.05 feet to a point;
9. THENCE South 00°26'22" East, departing SH121, for a distance of 97.47 feet to point;
10. THENCE North 89°57'34" East for a distance of 201.20 feet to a point at the northwest corner of that tract of land conveyed to M.E. Tittle as evidenced by deed recorded in Volume 296, Page 263 DRDCT;
11. THENCE South 00°31'25" East along the west line of the aforementioned Tittle tract and the west line of that tract conveyed to M.E. Tittle as evidenced by deed recorded in Volume 326, Page 71 DRDCT for a distance of 1304.54 feet to a point for corner;
12. THENCE South 60°50'29" West, departing said west line, for a distance of 1639.49 feet to a point for corner;
13. THENCE South 29°12'30" East, for a distance of 160.16 ft. to a point on the north line of Windhaven Parkway, for the beginning of a non-tangent circular curve to the left;
14. THENCE along said north line with said circular curve to the left, having a central angle of 20°23'51", a radius of 860.00 ft., a tangent length of 154.72 ft., and a chord of 304.55 ft., for an arc distance of 306.16 ft. to a point for corner at the intersection of said north line with the projected centerline of said Windhaven Parkway;
15. THENCE South 60°50'29" West, along said centerline, for a distance of 1546.72 ft. to a point for corner at the intersection of said centerline with the east line of said Josey Lane;
16. THENCE along said east line with a circular curve to the left having a central angle of 05°27'43", a radius of 5789.58 feet, a tangent length of 273.56 feet, and a chord length of 546.51 feet, for an arc distance of 546.71 feet to a point of tangency;
17. THENCE North 29°07'41" West, continuing along the east line of said Josey Lane, for a distance of 705.96 feet to the POINT OF BEGINNING and containing 119.874 acres of land.

**Parcel 10b - 86.412 acres (DCFWSO 1G)**

BEING a tract of land situated in the T. Wilson Survey Abstract No. 1352, the R. P. Hardin Survey Abstract No. 613, the J.B. Shipps Survey Abstract No. 1227, and the David Cook Survey Abstract No. 234, Denton County, Texas; said tract being a part of those certain lands conveyed to Castle Hills Property Co. as recorded in C.C. #2006-153340 of the Deed Records of Denton County, Texas (DRDCT); and being all of Windhaven Parkway East as dedicated by plat recorded in Cabinet X Page 453 DRDCT, and being all of Lewisville Towne Crossing Addition Lots 1-8 Block A per final plat recorded in Cabinet Y Page 388 DRDCT; and being a portion of a 2628 acre tract known as Denton County Fresh Water Supply District No. 1 (DCFWSO No.1) as recorded in Volume 1191 Page 111 DRDCT; and being more particularly described as follows

**COMMENCING** at the south end of a corner clip at the intersection of the south line of State Highway 121 (SH121), with the east line of Josey Lane, a 120 foot wide right-of-way; Thence South 29°07'41" East, along the east line of said Josey Lane, for a distance of 705.96 feet to a point for the beginning of a circular curve to the right; Thence continuing along said east line with said circular curve to the right having a central angle of 05°27'38", a radius of 5789.58 feet, a tangent length of 273.56 feet, and a chord length of 546.51 feet, for an arc distance of 546.71 feet to the intersection of said east line with the centerline of Windhaven Parkway for the **POINT OF BEGINNING**;

1. THENCE North 60°50'29" East, along said centerline, for a distance of 1546.72 ft. to a point for corner at the intersection of the projection of said centerline with the north line of said Windhaven Parkway;
2. THENCE along said north line with said circular curve to the right, having a central angle of 20°23'51", a radius of 860.00 ft., a tangent length of 154.72 ft., and a chord of 304.55 ft., for an arc distance of 306.16 ft. to a point for corner;
3. THENCE North 29°12'30" West, departing said north line, for a distance of 160.16 ft. to a point for corner;
4. THENCE North 60°50'29" East, for a distance of 1639.49 feet to a point for corner on the west line of that tract of land conveyed to M.E. Tittle as evidenced by deed recorded in Volume 296, Page 263 DRDCT;
5. THENCE South 00°31'25" East along the west line of the aforementioned Tittle tract and the west line of that tract conveyed to M.E. Tittle as evidenced by deed recorded in Volume 326, Page 71 DRDCT for a distance of 1314.81 feet to a point at the most northerly corner of that tract of land conveyed to M.E. Tittle by deed recorded in Volume 555, Page 181 DRDCT;
6. THENCE South 02°14'35" West, continuing along the west line of said Tittle tract, for a distance of 361.50 feet to a point, and continuing along said west line as follows;
7. South 13°07'35" West for a distance of 128.50 feet to a point;
8. South 28°31'35" West for a distance of 100.20 feet to a point;
9. South 41°35'35" West for a distance of 118.60 feet to a point;
10. South 58°37'35" West for a distance of 151.60 feet to a point;
11. South 64°20'35" West for a distance of 147.10 feet to a point for the southwest corner of the Tittle tract in the north line of the aforementioned Tittle tract recorded in Volume 326, Page 71;
12. THENCE North 89°40'47" West along said north line with the general line of a fence for a distance of 860.51 feet to a point at the northwest corner of the last mentioned Tittle tract in the east line of the F.O. Lord property;
13. THENCE North 00°22'52" West continuing with the general line of a fence for a distance of 15.00 feet to a point;
14. THENCE South 88°14'49" West continuing with the general line of a fence for a distance of 712.45 feet to a point;
15. THENCE South 00°20'02" East continuing with the general line of a fence for a distance of 25.70 feet to a point;
16. THENCE South 89°32'10" West, along the north line of that tract of land conveyed to F. O. Lord as evidenced by deed recorded in Volume 239, Page 260 DRDCT, a distance of 809.69 feet to a point on the east line of Josey Lane (a variable width right-of-way at this point);
17. THENCE North 24°23'13" West, along said east line, for a distance of 264.80 feet to a point for the beginning of a non-

tangent circular curve to the left;

18. THENCE continuing along said east line with said circular curve to the left having a central angle of  $02^{\circ}32'02''$ , a radius of 5789.58 feet, a tangent length of 128.05 feet, and a chord length of 256.03 feet, for an arc distance of 256.05 feet to the POINT OF BEGINNING and containing 86.412 acres of land.

**Parcel 11 - 4.988 acres (DCFWSO 1E)**

BEING a 4.9884 acre tract of land located in the Denton County, Texas and being part of the HARRISON YOUNG Survey Abstract No. 1448, AND also being, a part of a 2,628 acre tract of land known as Denton County Fresh Water Supply District No. 1 (DCFWSO No. 1) described in Volume 1191, Page 111 of the Deed Records of Denton County, Texas, and the subject tract being more particularly described as follows:

BEGINNING at the northeast corner of said 4.9884 acre tract; said point also being the northwest corner of Castle Hills Phase IV Section B as recorded in Cabinet W Page 378 of the Map Records of Denton County Texas (MRDCT); said tract being more particularly described as follows:

1. THENCE South 00°38'52" East, departing the south line of said F.M. 544, and along the west line of said Phase IV Section B, for a distance of 15.00 ft. to a point for corner;
2. THENCE South 34°30'37" West, continuing along said west line, for a distance of 181.78 ft. to a point for corner;
3. THENCE South 00°19'20" East, continuing along said west line, for a distance of 299.30 ft. to a point for corner;
4. THENCE South 05°22'58" West, continuing along said west line, for a distance of 31.18 ft. to a point for corner;
5. THENCE South 43°52'11" West, continuing along said west line for a distance of 38.15 ft. to a point for corner on a north line of said Phase IV Section B;
6. THENCE South 82°21'23" West, along said north line, for a distance of 31.18 ft. to a point for corner;
7. THENCE South 88°03'42" West, continuing along said north line, for a distance of 194.95 ft. to a point for corner;
8. THENCE South 43°51'02" West, continuing along said north line, for a distance of 143.51 ft. to a point for corner on the east line of F.M. Rd. 2281;
9. THENCE North 01°56'18" West, along said east line, for a distance of 88.12 ft. to a point for corner;
10. THENCE North 07°38'57" West, continuing along said east line, for a distance of 301.50 ft. to a point for corner;
11. THENCE North 01°56'18" West, continuing along said east line, for a distance of 190.00 ft. to a point for corner at the southwest end of a corner clip at the intersection of said east line with the south line of said F.M. 544;
12. THENCE North 41°16'26" East, along said corner clip, for a distance of 73.08 ft. to a point for corner at the northeast end of said clip and on the south line of said F.M. 544;
1. THENCE North 89°21'08" East, along said south line, for a distance of 457.02 ft. to the POINT OF BEGINNING and containing 4.988 acres of land.

**Parcel 12 - 5.548 acres (DCFWSO 1F)**

BEING a tract of land situated in the Harrison Young Survey Abstract No. 1448, Denton County, Texas; said tract being part of those certain lands described as "Tract 12", as conveyed to H.R. Bright by deed recorded in Volume 476, Page 207 of the Deed Records of Denton County, Texas; and being a portion of a 2628 acre tract known as Denton County Fresh Water Supply District No. 1 (DCFWSO No.1) as recorded in Volume 1191 Page 111 Deed Records Denton County, Texas (DRDCT); said 78.4697 acres of land being more particularly described as follows:

BEGINNING at a Texas Department of Transportation (TxDOT) right-of-way monument found for corner at the southeast end of a corner clip at the intersection of the south line of Farm To Market Road No. 544 (FM 544) (a variable width right-of-way), with the west line of Farm To Market Road No. 2281 (FM 2281 Denton Rd.) (a variable width right-of-way);

1. THENCE South 01°56'18" East, along said west line, for a distance of 177.10 feet to a one-half inch iron rod found for corner;
2. THENCE South 03°46'20" West, continuing along said west line, for a distance of 23.15 feet to a one-half inch iron rod found for corner at the northeast corner of Castle Hills Phase V Section A, as recorded in Cabinet Page DRDCT;
3. THENCE South 89°13'48" West, departing said west line and along the north line of said Phase V section A, for a distance of 997.11 ft. to a ½" iron rod found for corner on the east line of State Highway 121 Bypass (a variable width right-of-way);
4. THENCE North 16°12'07" East, along said east line, for a distance of 20.35 feet to a TxDOT right-of-way monument found for corner;
5. THENCE North 13°33'25" East, continuing along said east line, for a distance of 200.33 feet to a one-half inch iron rod found for corner at the southwest end of a corner clip at the intersection of said east line with the south line of said F.M. 544;
6. THENCE North 56°47'47" East, along said corner clip, for a distance of 115.08 feet to a one-half inch iron rod found for corner at the northeast end of said corner clip, and for the beginning of a non-tangent circular curve to the left on the south line of said F.M. 544;
7. THENCE along said south line with said circular curve to the left having a central angle of 10°33'44", a radius of 1492.40 feet, a tangent length of 137.95 feet, and a chord of South 85°29'21" East 274.72 feet, for an arc distance of 275.11 feet to a one-half inch iron rod found for corner;
8. THENCE North 89°13'47" East, continuing along said south line, for a distance of 518.37 feet to a TxDOT right-of-way marker found for corner at the northwest end of said corner clip at the intersection of said south line with the west line of said F.M. 2281 Denton Rd.;
9. THENCE South 46°17'15" East, along said corner clip, for a distance of 71.15 feet to the POINT OF BEGINNING and containing 5.548 acres of land.

**Parcel 13 - 3.067 acres (DCFWSO 1D)**

BEING part of Lot 4 Block A of Castle Hills Village Center per final plat recorded in Cabinet U Page 789 Deed Records Denton County, Texas (DRDCT), and being a portion of a 2628 acre tract known as Denton County Fresh Water Supply District No. 1 (DCFWSO No.1) as recorded in Volume 1191 Page 111 Deed Records Denton County, Texas (DRDCT); and being more particularly described as follows:

COMMENCING at the west end of a corner clip at the intersection of the southwest line of Lady of The Lake Blvd. (a 62 ft. right-of-way) with the southeast line of King Arthur Blvd. (a 62 ft. right-of-way); Thence South 88°05'30" East, along said corner clip, for a distance of 33.23 ft. to the east end of said corner clip; Thence South 43°05'30" East, along the southwest line of said Lady of The Lake Blvd., for a distance of 206.72 ft. to a point for the beginning of a circular curve to the right; Thence continuing along said southwest line, with said circular curve to the right having a central angle of 04°57'30", a radius of 269.00 ft., a tangent length of 11.65 ft., and a chord of 23.27 ft., for an arc distance of 197.11 ft.; Thence continuing along said southwest line with a compound circular curve to the right having a central angle of 10°51'22", a radius of 640.08 ft., a tangent length of 60.82 ft., a chord of 121.10 ft., and an arc distance of 121.28 ft. to a point at the intersection of said southwest line with a northeast line of DCFWSO 1D for the POINT OF BEGINNING:

1. THENCE continuing along said southwest line and departing said northeast line, with said circular curve to the right having a central angle of 23°35'42", a radius of 640.08 ft., a tangent length of 133.69 ft., and a chord length of 261.73 ft., for an arc distance of 263.59 ft. to a point for corner at the intersection of a northwest line of Lady of the Lake with a southeast line of said DCFWSO 1D;
2. THENCE South 50°02'40" West, departing said northwest line, and along said southeast line of DCFWSO 1D, for a distance of 174.56 ft. to a point for corner, said point being the intersection of said southeast line with the southwest line of said Lot 4 Block A of said Village Center;
3. THENCE North 43°05'29" West, departing said southeast line and along the southwest line of said Lot 4, for a distance of 341.20 ft. to a point for corner at the most northerly northeast corner of Lot 3 Block A, said point also being the most southerly southwest corner of Lot 2 Block A;
4. THENCE North 46°54'30" East, along the southeast line of said Lot 2, for a distance of 421.00 ft. to a point for corner at the intersection of said southeast line with said northeast line of DCFWSO 1D;
5. THENCE South 40°38'43" East, along said northeast line, for a distance of 238.86 ft. to the POINT OF BEGINNING and containing 3.067 acres of land.

**Parcel 14 - 7.435 acres (DCFWSO 1C)**

BEING a tract of land situated in the Peyton R. Splain Survey Abstract No. 1218 and the James Dooley Survey Abstract No. 343 Denton County, Texas; said tract being a portion of Lot 2 Block A of Castle Hills Golf Course per the final plat recorded in Cabinet S Page 326 of the Deed Records of Denton County, Texas (DRDCT); said tract also being a portion of a 2628 acre tract known as Denton County Fresh Water Supply District No. 1 (DCFWSO No.1) as recorded in Volume 1191 Page 111 Deed Records Denton County, Texas (DRDCT); and being more particularly described as follows:

BEGINNING at a point for corner on the south line of Lady of The Lake Blvd. (a variable width right-of-way at this point) as per dedication recorded in Cabinet T Page 116 DRDCT, said point being the most easterly corner of Lot 2 Block A of said Castle Hills Golf Course:

1. THENCE South  $54^{\circ}57'04''$  West, departing said south line and along a south line of said Lot 2, for a distance of 565.73 ft. to a point for corner;
2. THENCE South  $86^{\circ}40'14''$  West, continuing along said south line, for a distance of 405.36 ft. to a point for corner on the east line of a 400 ft. wide easement to T.X.U. (now Oncor) as recorded in Volume 392 Page 622, Volume 395 Page 417, and Volume 609 Page 547 DRDCT;
3. THENCE North  $24^{\circ}04'13''$  East, along said east line, for a distance of 686.74 ft. to a point for corner on the south line of said Lady of The Lake Blvd. and for the beginning of a circular curve to the right;
4. THENCE along said south line with said circular curve to the right having a central angle of  $10^{\circ}41'13''$ , a radius of 2150.00 ft., a tangent length of 201.10 ft., and a chord length of 400.44 ft., for an arc distance of 401.02 ft. to a point for corner and for the beginning of a compound circular curve to the right;
5. THENCE continuing along said south line with said circular curve to the right having a central angle of  $37^{\circ}23'19''$ , a radius of 350.00 ft., a tangent length of 118.43 ft., and a chord length of 224.36 ft., for an arc distance of 228.39 ft. to a point for corner;
6. THENCE South  $12^{\circ}44'40''$  East, continuing along said south line, for a distance of 65.43 ft. to the POINT OF BEGINNING and containing 7.435 acres of land.

**Parcel 15 - 24.383 acres (DCFWSO 1D)**

BEING 24.383 acres of land situated in the Horatio Grooms Survey Abstract No. 440 and the William Sparks Survey Abstract No. 1201, Denton County, Texas; said land being a part of that certain tract conveyed to H.R. Bright as First Tract as recorded in Volume 397, Page 372 of the Deed Records of Denton County, Texas (DRDCT); and being a portion of a 2628 acre tract known as Denton County Fresh Water Supply District No. 1 (DCFWSO No.1) as recorded in Volume 1191 Page 111 Deed Records Denton County, Texas (DRDCT); and being more particularly described as follows:

1. BEGINNING at a point for corner at the intersection of the north line of Cheyenne Drive (a 44 ft. right-of-way) with the southeast line of the final plat for Castle Hills Phase 2 Section B as recorded in Cabinet Q Slide 245 DRDCT;
2. THENCE North 43°08'31" West, along said northeast line, for a distance of 4.84 ft. to a point for corner at the intersection of said northeast line with the southeast line of an 18 ft. wide alley per said Castle Hills Phase 2 Section B final plat;
3. THENCE North 20°17'35" East, departing said northeast line and along the southeast line of said alley, for a distance of 16.77 ft. to a point for corner;
4. THENCE North 46°51'29" East, continuing along said southeast line, for a distance of 532.36 ft. to a point for corner and for the beginning of a circular curve to the left;
5. THENCE continuing along said southeast line with said circular curve to the left having a central angle of 02°24'54", a radius of 775.00 feet, a tangent length of 16.34 feet, and a chord of North 45°39'02" East 32.66 feet, for an arc distance of 32.67 feet to a point for corner;
6. THENCE North 73°01'01" East, continuing along said southeast line, for a distance of 47.83 ft. to a point for corner on a south line of said alley and for the beginning of a circular curve to the left;
7. THENCE along said south line with said circular curve to the left having a central angle of 12°58'14", a radius of 450.45 feet, a tangent length of 51.21 feet, and a chord of South 84°53'40" East 101.75 feet, for an arc distance of 101.97 feet to a point of tangency for corner;
8. THENCE North 88°56'08" East, continuing along said south line, passing at 444.70 ft. a west City Limit line of Lewisville, at 449.70 ft. an east City Limit line of Lewisville and the southeast corner of said Phase 2 Section B, and continuing for a total distance of 454.70 ft. to a point for corner on the west line of a tract conveyed to Carrollton General Hospital as recorded in Volume 1172 Page 631 DRDCT;
9. THENCE South 01°03'52" East, along said west line, parallel to and 5.00 ft. east of said Lewisville east City Limit line, passing at 303.01 ft. the southwest corner of said Carrollton General Hospital tract and the northwest corner of a tract called Brookhaven Nursing Center as recorded in Cabinet F Slide 212 DRDCT; and continuing for a total distance of 944.45 ft. to a point for corner on the west line of a tract conveyed to Farmers Branch Hospital Authority as recorded in Volume 1162 Page 377 DRDCT;
10. THENCE South 88°48'25" West, departing said west line, and along the north line of a tract conveyed to M.E. Moore as recorded in Volume 729 Page 631 DRDCT, for a distance of 1643.04 feet to a point for corner;
11. THENCE North 01°11'35" West, departing said north line, for a distance of 5.00 ft. to a point for corner on the southeast line of an 18 ft. alley in said Castle Hills Phase 2 Section B, said point also being on a south City Limit line of the City of Lewisville;
12. THENCE North 46°51'29" East, departing said south City Limit line, and along the southeast line of said alley, passing at 7.48 ft. a north City Limit line of Lewisville, and continuing along said southeast line for a total distance of 764.36 ft. to a point for corner;
13. THENCE North 73°25'23" East, continuing along said southeast line, for a distance of 16.77 ft. to a point for corner on the southwest line of said Cheyenne Drive;
14. THENCE South 43°08'31" East, along said southwest line, for a distance of 4.84 ft. to a point for corner, said point being the intersection of said southwest line with the southeast line of said Castle Hills Phase 2 Section B;
15. THENCE North 46°51'29" East, departing said southwest line, and proceeding perpendicular to said Cheyenne Drive,

for a distance of 44.00 ft. to the POINT OF BEGINNING and containing 24.383 acres of land.

**SAID TRACTS COMBINED TOTALING 492.014 ACRES OF LAND.**

*This description is not complete without the attached parcel exhibit.*

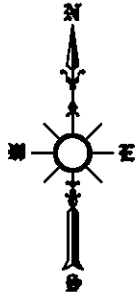
**Parcel 16 (DCFWSO 1B, 1C, 1D, 1E, 1F, 1G, 1H)**

BEING a tract of land situated in the B.B.B. & C.R.R. Survey Abstract No. 180, Denton County, Texas, said tract being a part of those certain lands conveyed to Castle Hills Development Corporation as recorded in Denton County Documents CC #97-026044 and CC #97-026045; and being a portion of a 2628 acre tract known as Denton County Fresh Water Supply District No. 1 (DCFWSO No.1) as recorded in Volume 1191 Page 111 Deed Records Denton County, Texas (DRDCT); said tract being more particularly described as follows:

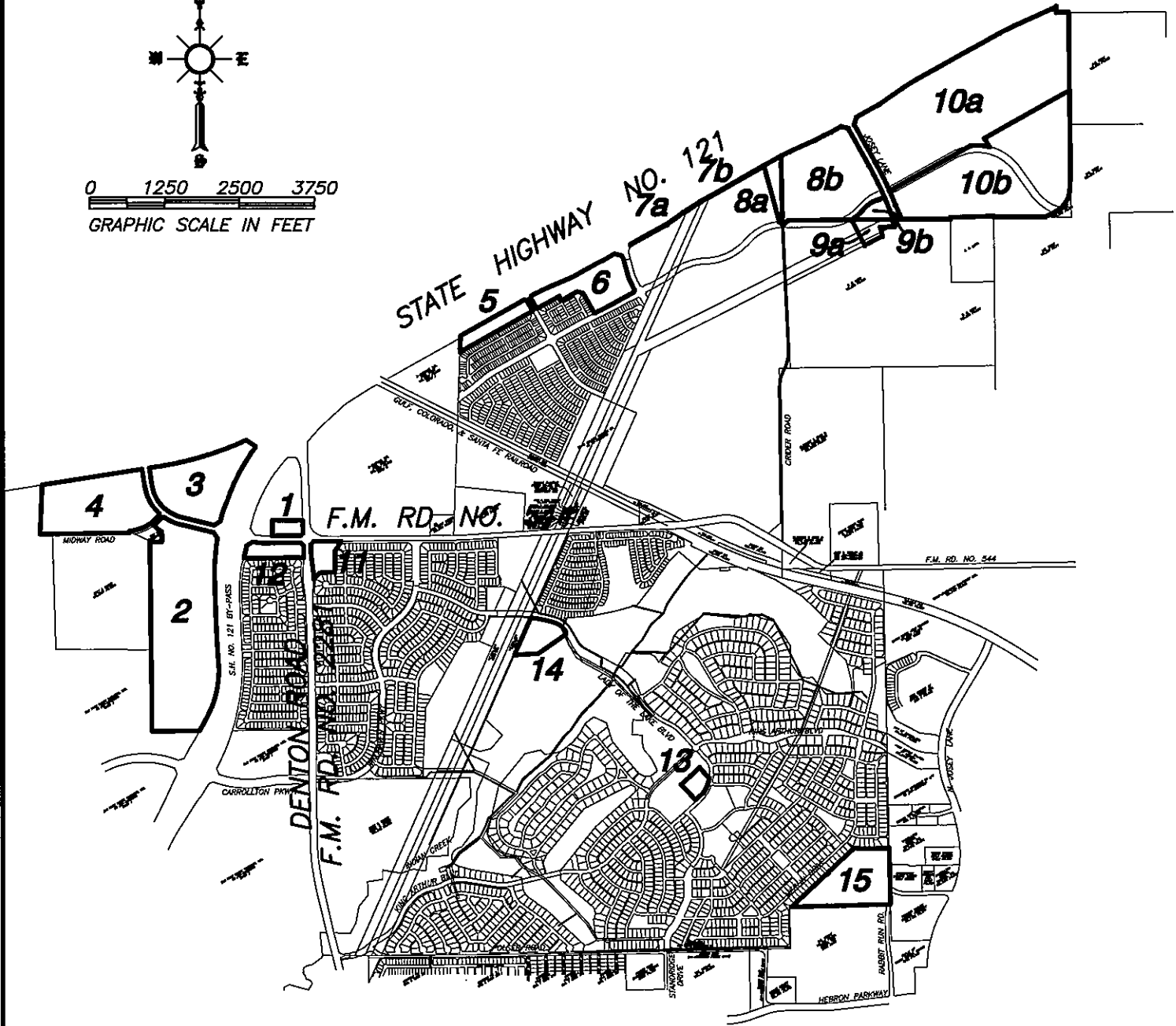
Being all street rights-of-way and alley rights-of-way dedicated by plat or separate instrument within the Denton County Fresh Water Supply District No. 1 and further evidenced by:

1. Amended Final Plat, Castle Hills, Phase I, Section A;
2. Amended Final Plat, Castle Hills, Phase I, Section B;
3. Amended Final Plat, Castle Hills, Phase I, Section C;
4. Final Plat, Castle Hills, Phase II, Section A;
5. Final Plat, Castle Hills, Phase II, Section B;
6. Final Plat, Castle Hills, Phase II, Section C;
7. Final Plat, Castle Hills, Phase II, Section D;
8. Final Plat, Castle Hills, Phase II, Section E;
9. Final Plat, Castle Hills, Phase III, Section A;
10. Final Plat, Castle Hills, Phase III, Section B;
11. Final Plat, Castle Hills, Phase III, Section C;
12. Final Plat, Castle Hills, Phase IV, Section A;
13. Final Plat, Castle Hills, Phase IV, Section B;
14. Final Plat, Castle Hills, Phase V, Section A;
15. Final Plat, Castle Hills, Phase V, Section B;
16. Final Plat, Castle Hills, Phase VI, Section A;
17. Final Plat, Castle Hills, Phase VI, Section B;
18. Final Plat, Castle Hills, Phase VI, Section C;
19. Final Plat, Castle Hills, Phase VI, Section D;
20. Final Plat, Castle Hills, Phase VI, Section E;
21. Final Plat, Castle Hills, Phase VI, Section F;
22. Final Plat, Castle Hills, Phase VI, Section G;
23. Final Plat, Castle Hills Community Center Addition;
24. Final Plat, Windhaven Parkway East Addition;
25. Final Plat, Castle Hills – Phase I, King Arthur Blvd. R.O.W. Street Connection between Section B and Section C;
26. Final Plat, Castle Hills – Phase I, Merlin Drive R.O.W. Street Connection between Section A and Section B;
- 27.
28. Final Plat, Castle Hills – King Arthur Blvd. Phase III, Right-of-way Dedication;
29. Final Plat, Castle Hills – King Arthur Blvd. Phase IIIB, Right-of-way Dedication;
30. Final Plat, Castle Hills, Lady of the Lake Blvd., Right-of-way Dedication;

31. Final Plat, Castle Hills, Windhaven Parkway, from Standridge Drive to Josey Lane, Right-of-way Dedication;
32. Lewisville Towne Crossing Addition;



0 1250 2500 3750  
GRAPHIC SCALE IN FEET



DESIGN BY: TRC  
DRAWN BY: TRC  
JOB NUMBER:  
DATE: FEB., 2009

PARCEL EXHIBIT  
STRATEGIC PARTNERSHIP AGREEMENT  
PARCELS 1-15  
LEWISVILLE ETJ, DENTON COUNTY, TEXAS



TRC ENGINEERS, INC.  
6136 FRISCO SQUARE BLVD. STE. 375, FRISCO TX 75084  
PH. 972-712-6400 / FAX 214-712-4880